



# IBSA

## Illinois Baptist State Association PARTNERSHIP REPORT • Fall 2022

Illinois needs strong IBSA churches. In every corner of our state, people need the life-giving gospel, the warmth of genuine community, the compassionate service, and the commitment to missions found in strong IBSA churches. The past two years have been difficult, to say the least. Many churches are still struggling. But thanks to the strength of the network, IBSA is working with hundreds of churches across the state in new ways to help each church thrive. Thank you for your church's faithfulness to be a light in your neighborhood and for your commitment to your fellow churches of the Illinois Baptist State Association. Each church is stronger when the network is stronger.

**Nate Adams**

IBSA Executive Director



Watch the video at

► [IBSA.org/partnershipreport](https://www.ibsa.org/partnershipreport)

At the mid-point of 2022, a corner has been turned. While church attendance for many has not returned to pre-COVID levels and inflation presents economic challenges, much of the pandemic-driven uncertainty that marked the previous two years has passed. Life has changed, but churches are navigating evangelism and discipleship in this new landscape and IBSA is actively engaged in helping them in new ways.

In 2022, the unique setting and ministries of each Illinois Baptist church are more diverse than ever. In response, IBSA staff have shifted to help with processes rather than programs by focusing on what



leads churches into health, growth, and mission. This annual report communicates a baseline of key church data from the 2021 Annual Church Profile along with a mid-year update on how IBSA is helping churches thrive in the areas of **health, growth, and mission.**

### How many of us are there?

#### The network

Affiliated churches: **839**

Church missions and church plants: **62**

**IBSA helps EACH church be a missionary**

#### IBSA staff serving the network

Springfield Health, Growth, and Mission: **14**

Field based Health, Growth, and Mission: **11**

Springfield Partnership: **5**

Springfield Engagement: **7**

#### From the Annual Church Profiles (ACP)

	Total baptisms	Professions of faith	Worship attendance	VBS enrollment	Cooperative Program
2020	2,047	1,668	61,444	10,354	\$5,443,103.97
2021	1,985	2,184 ↑	46,747	15,735 ↑	\$5,835,888.66 ↑

# Through the first 6 months of 2022

## ► Investing in the next generation

Over **600 students** disciplined in IBSA summer camps

**84 professions of faith** made at camps

**5 collegiate campus ministries**, plus new campus ministries beginning at Illinois State and McKendree this fall

Almost **300 students** trained to share their faith



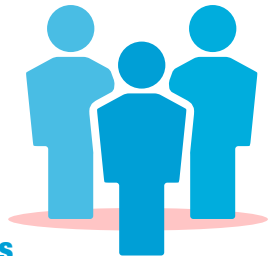
## ► Strengthening churches and leaders

**97 churches** engaged in Next Step consultation

**48 churches** in IBSA revitalization processes

**1,064 church leaders** trained from **170 churches**

**60 church leaders** helped lead network trainings



## ► Multiplying churches

**32 church plants** currently supported

**5 new churches** launched so far this year, **18 total** expected by year end

**16 new churches** affiliated in 2021



## ► Illinois is a mission field

**13 million people** live in our state

Over **8,000,000** without relationship with Jesus

**10 counties** with no IBSA church



## ► Churches fuel the mission



Total IBSA church Cooperative Program contributions in 2021: **\$5,835,888.66**

January through June of 2022, CP has totaled **\$2,614,032.69**



**Mission Illinois Offering & Week of Prayer**

2021: **\$327,417**

2022 goal: **\$350,000**